

- ▲ In-Service Pennsylvania Thru Truss (2)
- ⊘ Demolished NR Pennsylvania Thru Truss (2)
- Preserved Pennsylvania Thru Truss (0)

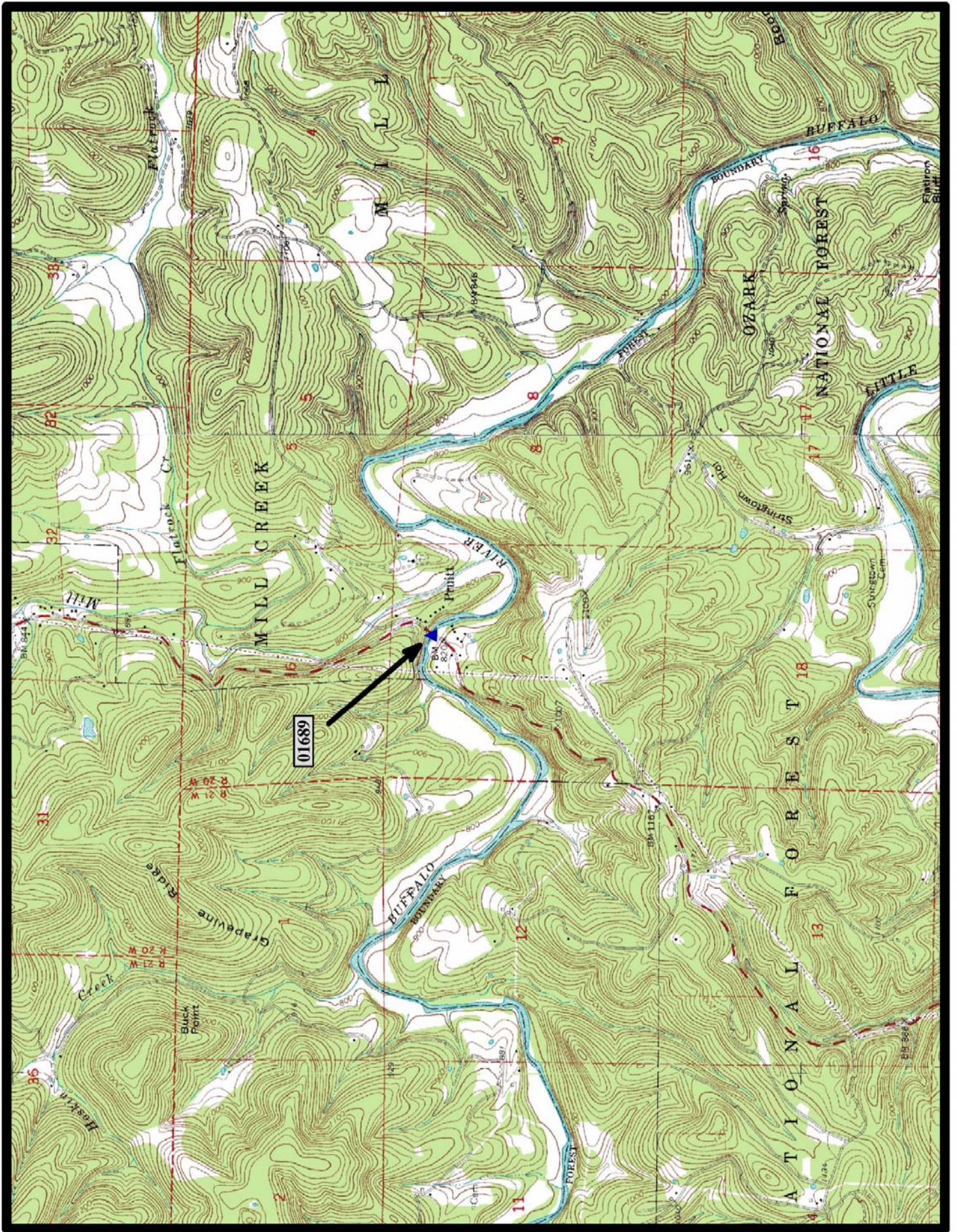
## Pennsylvania Thru Truss Bridges





**HISTORIC BRIDGE #01689**  
**STATE HIGHWAY 7**  
**NEWTON COUNTY**  
**PENNSYLVANIA THRU TRUSS**  
**CROSSES - BUFFALO RIVER**  
**DATE OF CONSTRUCTION - 1931**  
**BUILDER - FRED LUTTJOHANN, TOPEKA, KS**  
**HISTORIC BRIDGE INVENTORY DATE - 1987**  
**SHPO NUMBER - NW0029**  
**HAER NUMBER - AR-23**  
**DATE LISTED ON NATIONAL REGISTER -**  
**LAT./LONG. 36:03:40.46, -93:08:17.02**





↑  
North

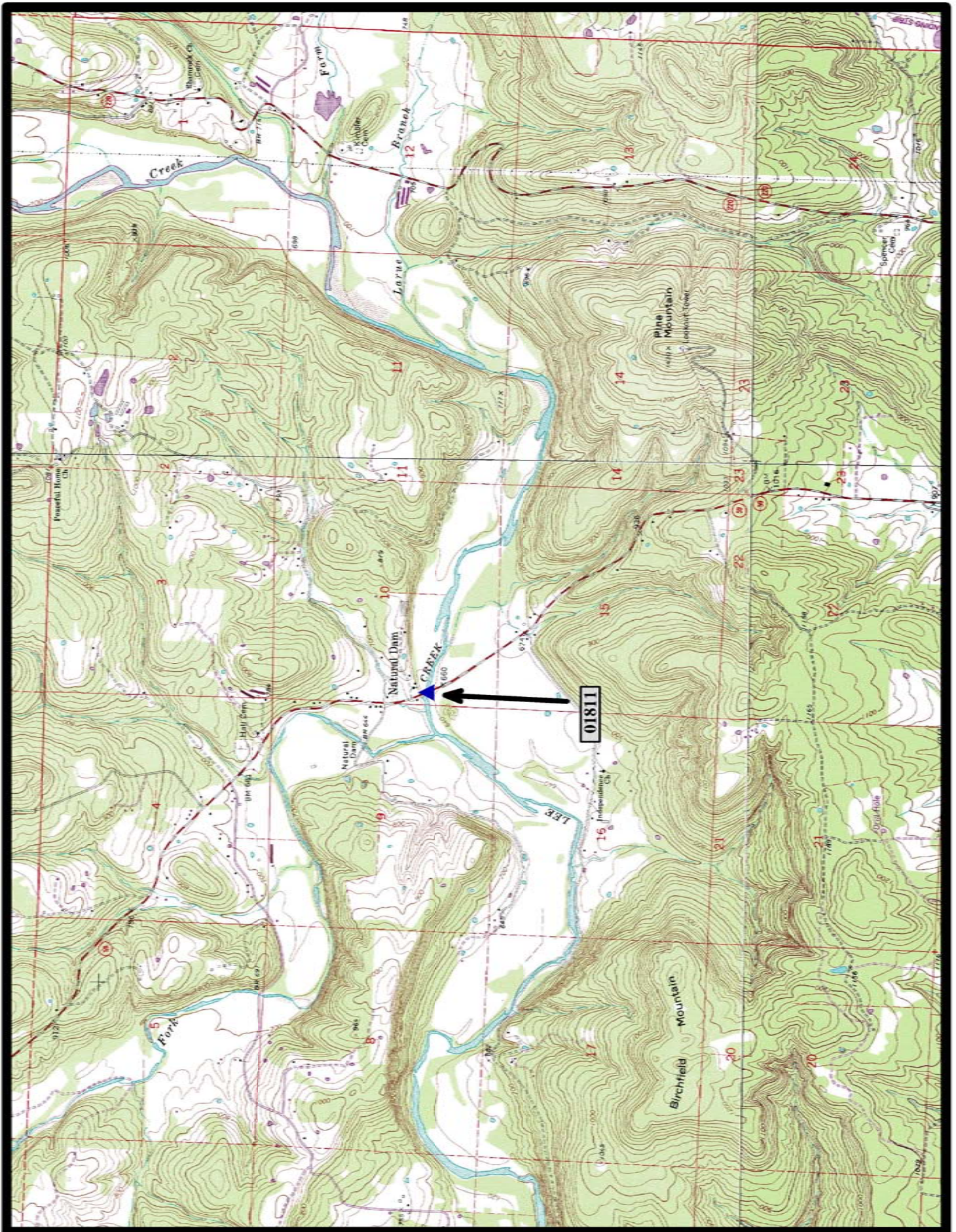
Jasper 7.5 min. Quad





**HISTORIC BRIDGE #01811**  
**STATE HIGHWAY 59**  
**CRAWFORD COUNTY**  
**PENNSYLVANIA THRU TRUSS**  
**CROSSES - LEE CREEK**  
**DATE OF CONSTRUCTION – 1934**  
**BUILDER - M. E. GILLIOZ COMPANY, MONETT, MO**  
**HISTORIC BRIDGE INVENTORY DATE - 1987**  
**SHPO NUMBER – CW0158**  
**HAER NUMBER - AR-24**  
**DATE LISTED ON NATIONAL REGISTER - 4/6/1990**  
**LAT./LONG. 35:38:45.43, -94:23:37.27**





←  
North

Natural Dam 7.5 min. Quad